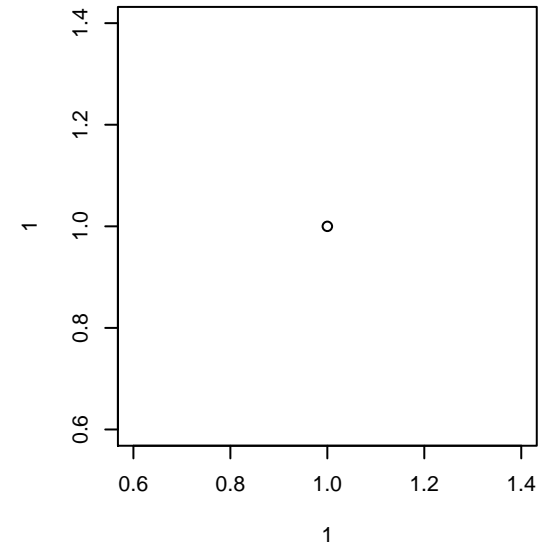


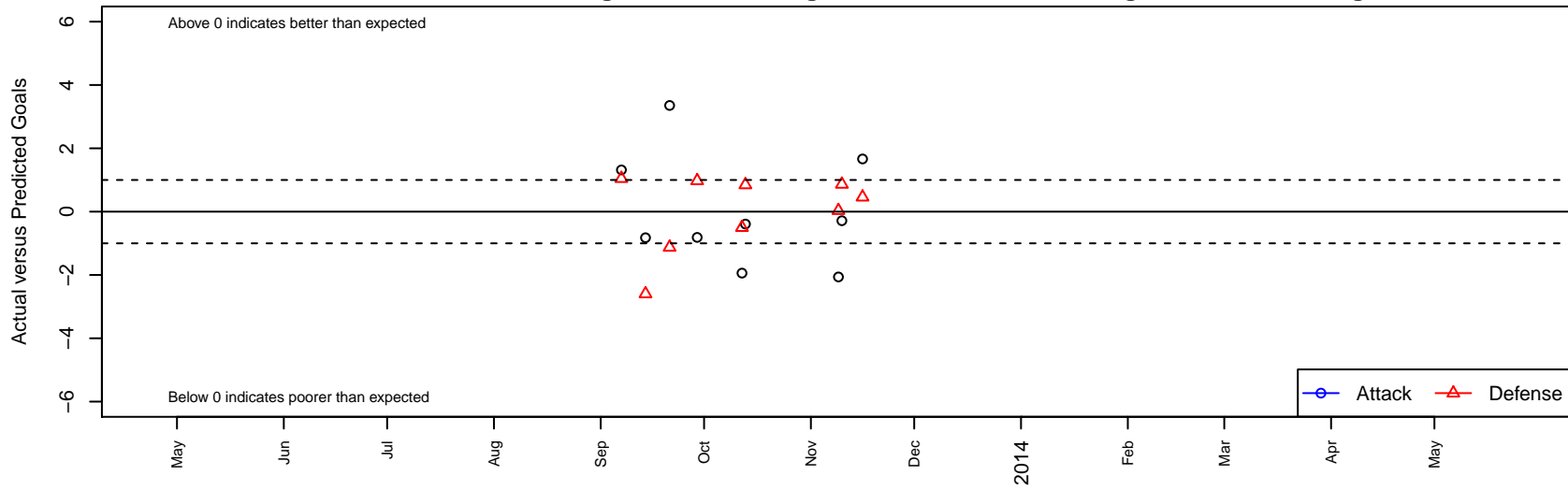
# GSC Gryphons Red G02

, CAN  
 G02 total strength=622  
 attack=1.03 defense=0.28  
 alt names used:  
 GSC Gryphons 02G Red

Venues played:  
 NorCal Premier F11 2 – Region 2–3–4 U11



**GSC Gryphons Red G02**  
 Dots are actual minus expected GF (blue circles) and GA (red triangles).  
 Blue line is smoothed change in attack strength. Red is smoothed change in defense strength.



	<b>date</b>	<b>home</b>		<b>away</b>		<b>venue</b>	<b>pred.home</b>	<b>pred.away</b>
2774	2013-11-16	Pleasanton Rage Orange II G02	1	GSC Gryphons Red G02	4	NorCal Premier F11 2 – Region 2-3-4 U11	1.46	2.3
2738	2013-11-10	GSC Gryphons Red G02	3	CV San Jose FC Academy G02	1	NorCal Premier F11 2 – Region 2-3-4 U11	3.29	1.9
2663	2013-11-09	Heritage SC Firestorm G02	2	GSC Gryphons Red G02	2	NorCal Premier F11 2 – Region 2-3-4 U11	2.03	4.1
2170	2013-10-13	GSC Gryphons Red G02	4	Diablo FC G02	1	NorCal Premier F11 2 – Region 2-3-4 U11	4.39	1.8
2083	2013-10-12	GSC Gryphons Red G02	4	Castro Valley United Green G02	2	NorCal Premier F11 2 – Region 2-3-4 U11	5.94	1.5
1812	2013-09-29	PSV Union FC G02	1	GSC Gryphons Red G02	6	NorCal Premier F11 2 – Region 2-3-4 U11	1.97	6.8
1569	2013-09-21	San Ramon 03 Azuri G02	2	GSC Gryphons Red G02	10	NorCal Premier F11 2 – Region 2-3-4 U11	0.87	6.6
1400	2013-09-14	GSC Gryphons Red G02	1	Burlingame SC Freeze G02	7	NorCal Premier F11 2 – Region 2-3-4 U11	1.82	4.4
1228	2013-09-07	De Anza Force Blue G02	2	GSC Gryphons Red G02	4	NorCal Premier F11 2 – Region 2-3-4 U11	3.05	2.7